

total
eclipse of
the  of 

SM

ECLIPSEBORO
HILLSBORO, TX
APRIL 8, 2024
01:38:43PM

ECLIPSE GUIDE



HILLSBORO
WHERE CONNECTION HAPPENS



ECLIPSEBORO
HILLSBORO, TX | APRIL 8, 2024 | 1:38:43 PM

TABLE OF CONTENTS

TABLE OF CONTENTS	2
CITY PLANNING	4
ECLIPSE FACTS	6
TOURISM AND ACCOMMODATIONS	9
RENTING YOUR HOME OR LAND TO ECLIPSE TOURISTS	12
HEALTH, SAFETY, AND LOGISTICS	14
EYE PROTECTION FOR TOTAL ECLIPSE VIEWING	16
TIPS FOR HILLSBORO RESIDENTS	17
TIPS FOR HILLSBORO BUSINESSES	20
TIPS FOR HILLSBORO CHURCHES, NONPROFITS, AND CIVIC GROUPS	23
TIPS FOR ECLIPSE VISITORS	25
RULES AND ETIQUETTE	26
FREQUENTLY ASKED QUESTIONS	27
HELPFUL RESOURCES AND LINKS	30

ABOUT THIS DOCUMENT

This is a “living” document that will be updated as needed. Please keep this in mind. For the latest updates on Eclipseboro developments, follow us on social media and subscribe to our newsletters:

Website	www.eclipseboro.com
Facebook	www.facebook.com/Eclipseboro2024
Instagram	www.instagram.com/eclipseboro/
Hillsboro Residents Newsletter Signup	www.eclipseboro.com/community
Eclipse Visitors Newsletters Signup	www.eclipseboro.com/visitors

For additional information or specific questions:

Hillsboro residents, churches, nonprofits, and civic groups	City of Hillsboro, TX Contact: Allyson Cliett Special Projects Coordinator Email: acliett@hillsborotx.org Phone: (254) 582-3271 Website: www.eclipseboro.com/community
Hillsboro businesses	Contact: Lynette Hearrell Chamber Director Hillsboro Chamber of Commerce Email: director@hillsborochamber.org Phone: (254) 582-2581 Website: www.eclipseboro.com/community
Eclipse visitors	Eclipseboro Website: www.eclipseboro.com/visitors Email: info@eclipseboro.com Phone: (254) 582-3271

CITY PLANNING

Eclipseboro is a celebration of the 2024 total solar eclipse and a response by the City of Hillsboro to ensure a safe and memorable experience for our residents and guests. Planning began in September 2022 with participation from:

- City, County, and State governments
- Multiple law enforcement agencies
- Multiple emergency management and first responder agencies
- Local media, private businesses, and civic organizations

Guiding Principles

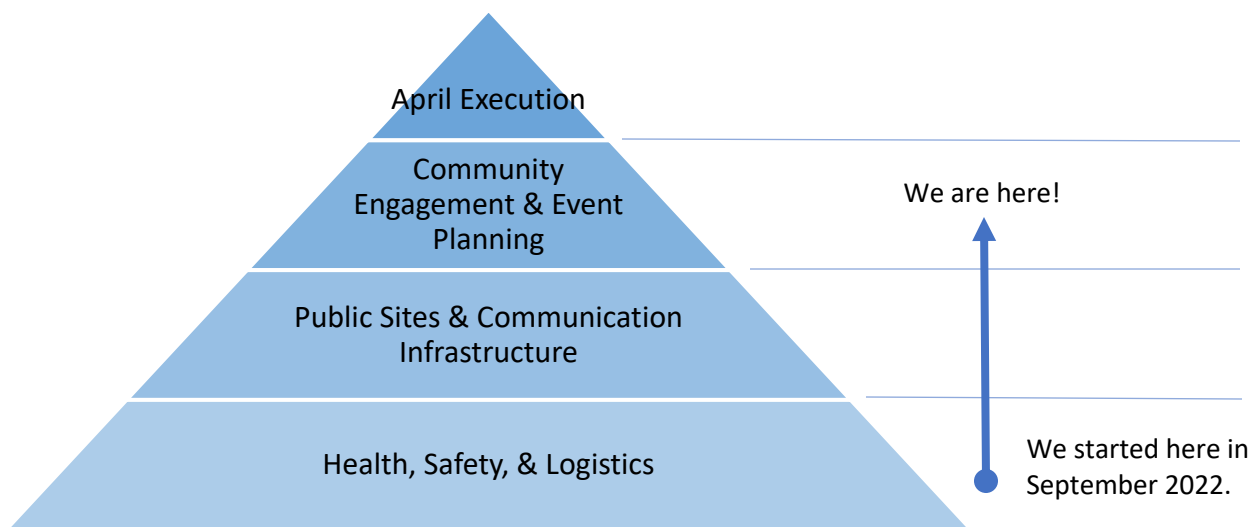
- Consistent with the resources available, provide an environment that promotes a safe and enjoyable experience for residents and visitors.
- Embrace the opportunity to showcase the positive aspects of living in Hillsboro.
- Encourage active participation in eclipse activities by all interested residents, businesses, and civic groups.

Committees and Organizational Structure

City Administration has organized an Eclipseboro Planning Team that guides four committees focused on the following community impact areas:

1. Health, safety, and logistics
2. Public sites and events
3. Communications and public relations
4. Private Business

Priority Structure



Partners in Planning

Members of Eclipseboro committees represent:

Ahh For Real Podcast	Hillsboro ISD
Air E Vac	Hillsboro Municipal Airport
Boys & Girls Club of Hillsboro	Hillsboro Reporter
City of Hillsboro Administration	Hillsboro Chamber of Commerce
Divine Home Care	Heart of Texas Council of Governments
Douglas Carr Cunningham Photography	KHBR AM 1560
Go Hillsboro	Lake Whitney Chamber of Commerce
Hill College	Lake Whitney State Park
Hill County Emergency Management	Leadership Greater Hillsboro
Hill County Cell Block Museum	Main Street Hillsboro
Hill County Sheriff's Department	North Texas Airstream Community
Hillsboro Economic Development Corp.	Sheri Hemrick Photography
Hill Regional Hospital	Texas Department of Transportation
Hillsboro Arts League	Texas Heritage Museum
Hillsboro City Council	Texas Parks & Wildlife
Hillsboro City Library	Texas Through Time Museum
Hillsboro Department of Public Safety	Whitney Lakelander
Hillsboro Fire & Rescue	Whitney Police Department

For information on how to get involved, visit www.eclipseboro.com/joinus

ECLIPSE FACTS

[Total Eclipse Date and Time](#)

Eclipse Date: Monday, April 8, 2024

Eclipse Time: 12:21 p.m. to 3:01 p.m. with totality (darkness) 1:38 p.m. to 1:43 p.m.

Community Impact Days: Thursday, April 4 – Tuesday, April 9, 2024

[Annular Eclipse Date and Time](#)

Eclipse Date: Saturday, October 14, 2023

Eclipse Time: 10:23 a.m. to 1:30 p.m. with maximum eclipse at 11:53 a.m.

Community Impact Days: Low impact only Saturday, October 14, 2024

[Wait, there are TWO Eclipses?](#)

Yes! Two solar eclipses will pass over Texas within a six-month time frame. This is an extremely rare and exceptional circumstance that promises to draw visitors from across the United States and around the world.

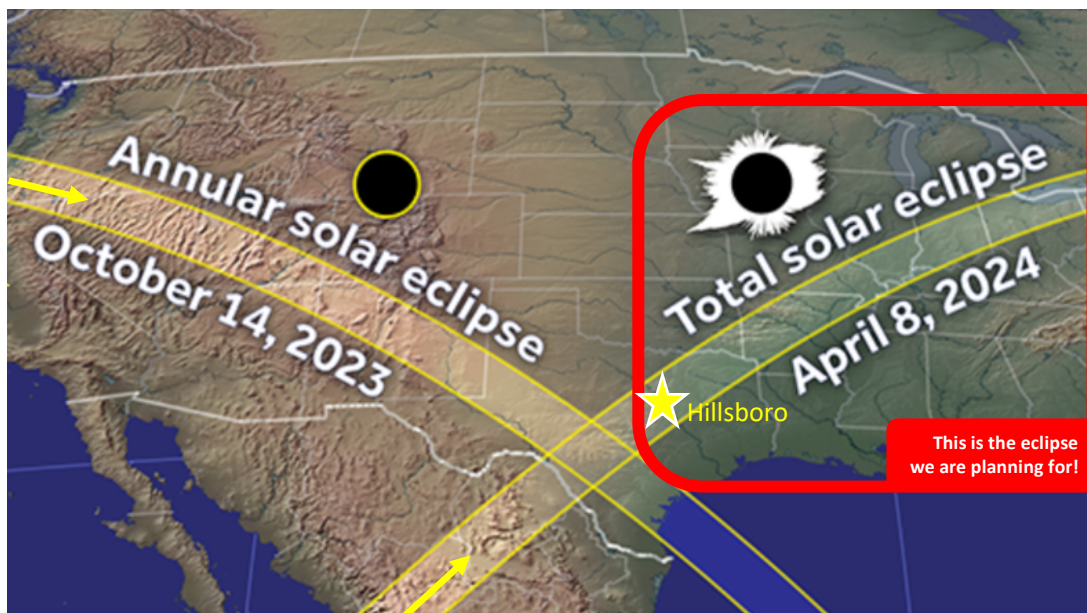


Figure 1: Paths of the annular and total solar eclipses crisscrossing over Texas. Source: [Great American Eclipse](#).

On Saturday, October 14, 2023, an **annular solar eclipse** traveled through California, Nevada, Utah, Colorado, Arizona, and New Mexico before reaching Texas. Those along the path of totality saw the Sun as a “ring of fire.” Hillsboro was not situated along this line, so we experienced a partial annual eclipse.

On Monday, April 8, 2024, a **total solar eclipse** will travel over Mexico, Texas, and 14 additional US states, from Arkansas to Maine. Hillsboro is situated directly along the path of totality and will experience the full effect of this eclipse, including complete blockage of the face of the Sun. **We anticipate a large influx of tourists for this event on April 8, 2024.**

What is a Total Solar Eclipse?

A total solar eclipse occurs when the Moon passes between the Earth and the Sun, completely blocking the face of the Sun and casting a vast shadow upon our planet. The darkest part of the shadow is the umbra, where a total eclipse occurs.

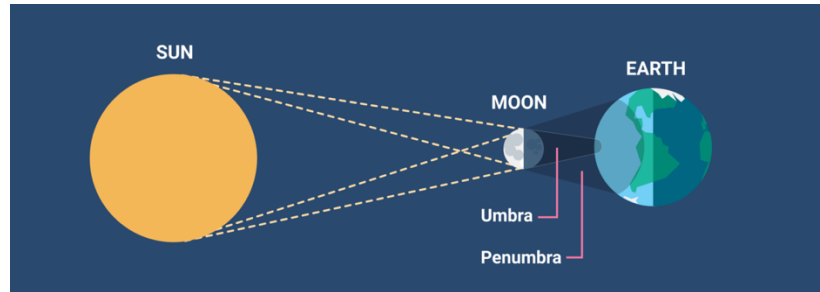


Figure 2: Figure 3: Mechanics of a total eclipse with umbral and penumbral shadows.

There are three basic types of solar eclipses:

PARTIAL SOLAR ECLIPSE

The Moon and Sun are not perfectly aligned and only part of the Sun is blocked.



Last here: August 21, 2017

Next here: January 26, 2028

ANNULAR SOLAR ECLIPSE

The Moon and Sun are perfectly aligned, but the Moon is too far away from the Earth to completely obscure the Sun.



May 20, 2012

October 14, 2023

*Hillsboro is not in the path of totality for this eclipse and will witness only partial effects in 2023.

TOTAL SOLAR ECLIPSE

The Moon and Sun are perfectly aligned, and the Moon is close enough to Earth to completely obscure the Sun. The result is **totality**.



July 29, 1878

April 8, 2024

*Hillsboro lies directly along the path of this eclipse and will witness full effects in 2024.

What is the big deal?

On August 21, 2017, American witnessed its first coast-to-coast total solar eclipse in almost 100 years. Thousands of tourists traveled to the line of totality to witness the event. The total solar eclipse on April 8, 2024 will last almost 2 minutes longer than 2017! A total solar eclipse is visible from Earth only along a very narrow path, for just a few short minutes, making it one of the rarest events in nature. On average, it takes about 375 years for a total solar eclipse to happen again at the same location. The last total eclipse in Hillsboro was July 29, 1878. After 2024, the next total eclipse in Hillsboro will not occur until after 2185.

How Long is the Eclipse?

In Hillsboro, the entire eclipse event will occur from 12:21 p.m. to 3:01 p.m. That's **2 hours 40 minutes** of eclipse effects. This is when we will be shaded by the Moon's **penumbra**, the large, gray, circular shadow in FIGURE 3. The most dramatic period of the eclipse is "totality" and will occur from 1:38 p.m. to 1:43 p.m. This is when Hillsboro will be shaded by the darkest part of the Moon's shadow, the **umbra**. The tiny black dot in FIGURE 3 is the umbra over Hillsboro. The umbra will travel at a speed of ~1,652 mph and will block sunlight in Hillsboro for **4 minutes 22.5 seconds of totality**.



Figure 3: Umbral and penumbral shadows over Hillsboro.

What will Happen During the Eclipse?

During totality, Hillsboro will experience a 360-degree sunset. The afternoon sky will darken as if it were dawn or dusk. Soft wisps of the Sun's fiery atmosphere, normally invisible to the naked eye, will become visible around the Moon. This is a very rare and dazzling phenomenon. Scientists and observers have reported a quieting of nature during total solar eclipses. Birds stop chirping, bees cease buzzing, and frogs and crickets will chorus. The temperature will drop around 5° to 20°, depending on the weather.

Sources:

NASA solarsystem.nasa.gov/eclipses/2024/apr-8-total/overview/

Great American Eclipse www.greatamericaneclipse.com/

Eclipse 2024 eclipse2024.org/eclipse-cities/city/38893.html

National Eclipse nationaleclipse.com/index.html

Smithsonian Magazine www.smithsonianmag.com/innovation/what-does-eclipse-sound-180964203/



Figure 4: Phases of a total solar eclipse with totality at center. Source: solareclipseguide.com

TOURISM AND ACCOMMODATIONS

Eclipse Date: Monday, April 8, 2024

Eclipse Time: 12:21 p.m. to 3:01 p.m. with totality (darkness) 1:38 p.m. to 1:43 p.m.

Community Impact Days: Thursday, April 4 – Tuesday, April 9, 2024

Why Hillsboro?

Hillsboro is situated directly along the eclipse’s center line of totality, which marks the optimal location for viewing. Communities along this line will receive the highest numbers of tourists. Larger cities will see larger numbers of tourists, but Hillsboro should be prepared for a significant influx. Attention was drawn our area when [Astronomy magazine listed Hillsboro #7 of 20 best places to view the total eclipse](#), and we received [a brief mention in Texas Monthly](#). Hillsboro is a prime location for eclipse tourism due to our low light pollution levels, convenient location on I-35, and duration of totality. Totality in Hillsboro will last 4 minutes and 23 seconds, just 5 seconds short of the maximum for this eclipse.



Tourist Demographics and Numbers

What type of people are coming?

Tourists are expected to travel from near and far. Regional visitors will drive to Hillsboro for a better view and committed eclipse-chasers known as “umbraphiles” will travel great distances. Most eclipse tourists fall into one or more of the following categories:

- **The Eclipse Enthusiast** - This tourist has been eagerly anticipating the eclipse and may have traveled a long distance specifically for this event. They are knowledgeable about eclipses and may be interested in scientific or astronomical discussions.
- **The Nature Lover** - This tourist is drawn to the natural beauty of the eclipse and may be interested in viewing the event from a scenic location or participating in outdoor activities in the area.
- **The Cultural Tourist** - This tourist is interested in learning about the local culture and history surrounding the eclipse event. They may be interested in visiting museums, attending cultural events, or taking part in local traditions.
- **The Photographer** - This tourist is focused on capturing the perfect eclipse photo or video. They may be interested in learning about the best photography techniques for capturing the event.
- **The Spiritual Seeker** - This tourist is interested in the spiritual significance of the eclipse and may be seeking a deeper understanding or connection to the event. They may be interested in attending spiritual or meditative events.
- **The Adventure Seeker** - This tourist is looking for unique and exciting eclipse-viewing experiences, such as hiking to a remote location or taking a hot air balloon ride during the eclipse.

- **The Socializer** - This tourist is interested in meeting new people and socializing during the eclipse event. They may be interested in attending social events or joining group activities.
- **The Foodie** - This tourist is interested in trying local cuisine and may be seeking out food-related eclipse events or restaurants.
- **The Family Traveler** - This tourist is traveling with their family and is looking for eclipse-related activities suitable for children or family-friendly accommodations.
- **The Last-Minute Traveler** - This tourist may have decided to travel to the area at the last minute and is looking for information on eclipse-related events and activities. They may be interested in joining group tours or attending public events.

Source: Arkansas Tech University www.atu.edu/emergencymanagement/eclipse.php

How many people are coming?

[Great American Eclipse](#) is predicting anywhere from 15,000 to 60,000 visitors will travel to Hillsboro. Even the low end of this range is significant. While it is impossible to predict the exact number of people traveling to Hillsboro, we expect thousands. Occupancy data is being collected and will build over time to assist in planning by our Health, Safety, and Logistics team.

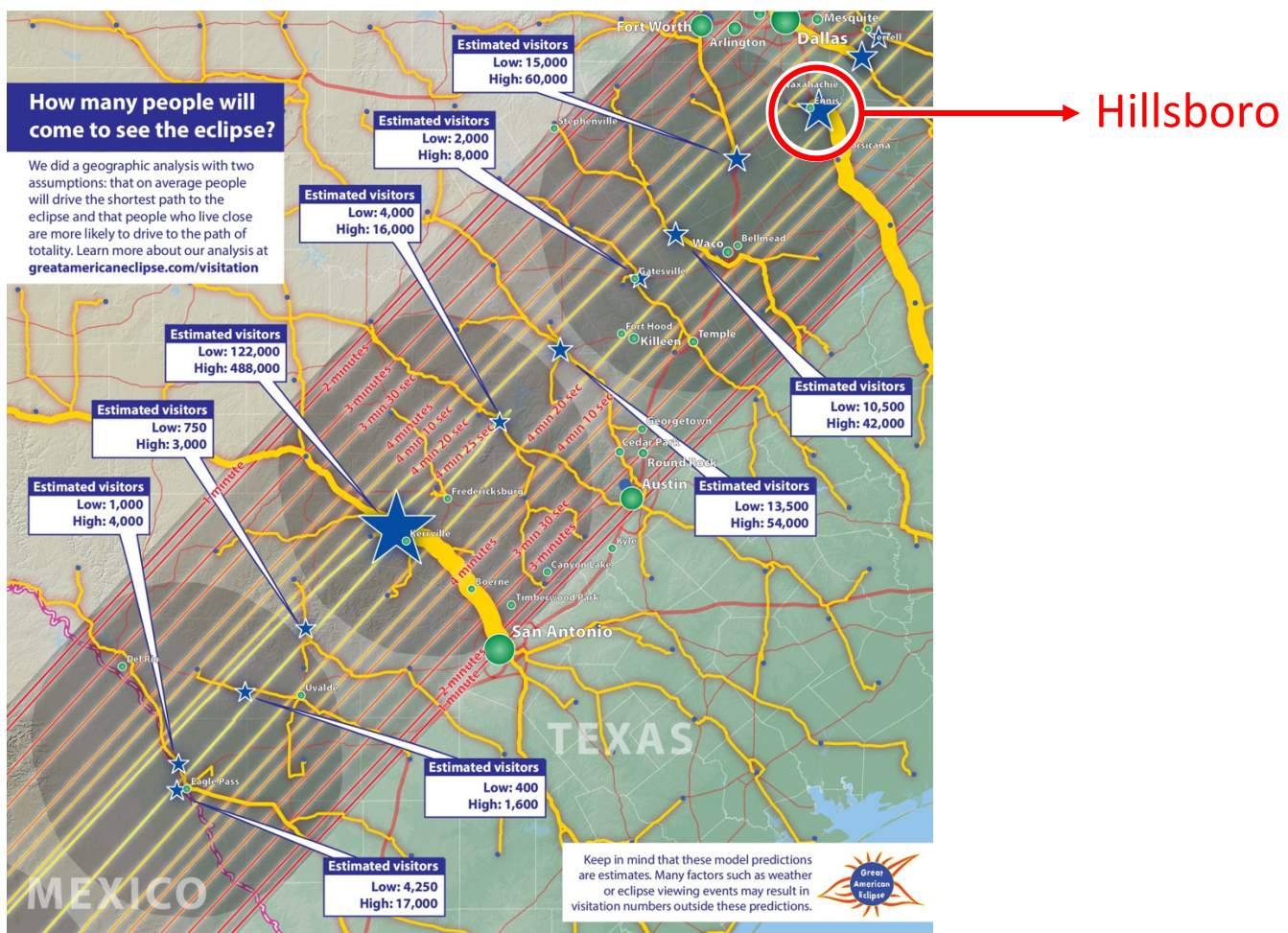


Figure 5: Estimate of eclipse tourists traveling to Texas. Source: Michael Zeiler of Great American Eclipse.

Accommodations

Hotels in Hillsboro are mostly sold out, and for premium prices on the days leading up to April 8, 2024. Many tourists are making plans to stay with friends and family. Umbraphiles will often camp along the path of totality. To accommodate the influx in tourists who may prefer camping or are unable to find a hotel room, the City of Hillsboro is listing tent, RV, and airplane campsites for reservations at Wallace Park, the Outlet Mall, and Hillsboro Municipal Airport respectively. Additionally, private citizens and entities are offering spaces on Airbnb, Vrbo, Hipcamp, and Harvest Host. Tourists arriving without a camping plan will be directed to designated locations.

For a list of campsites and short-term rentals, see <https://www.eclipseboro.com/lodging>.

RENTING YOUR HOME OR LAND TO ECLIPSE TOURISTS

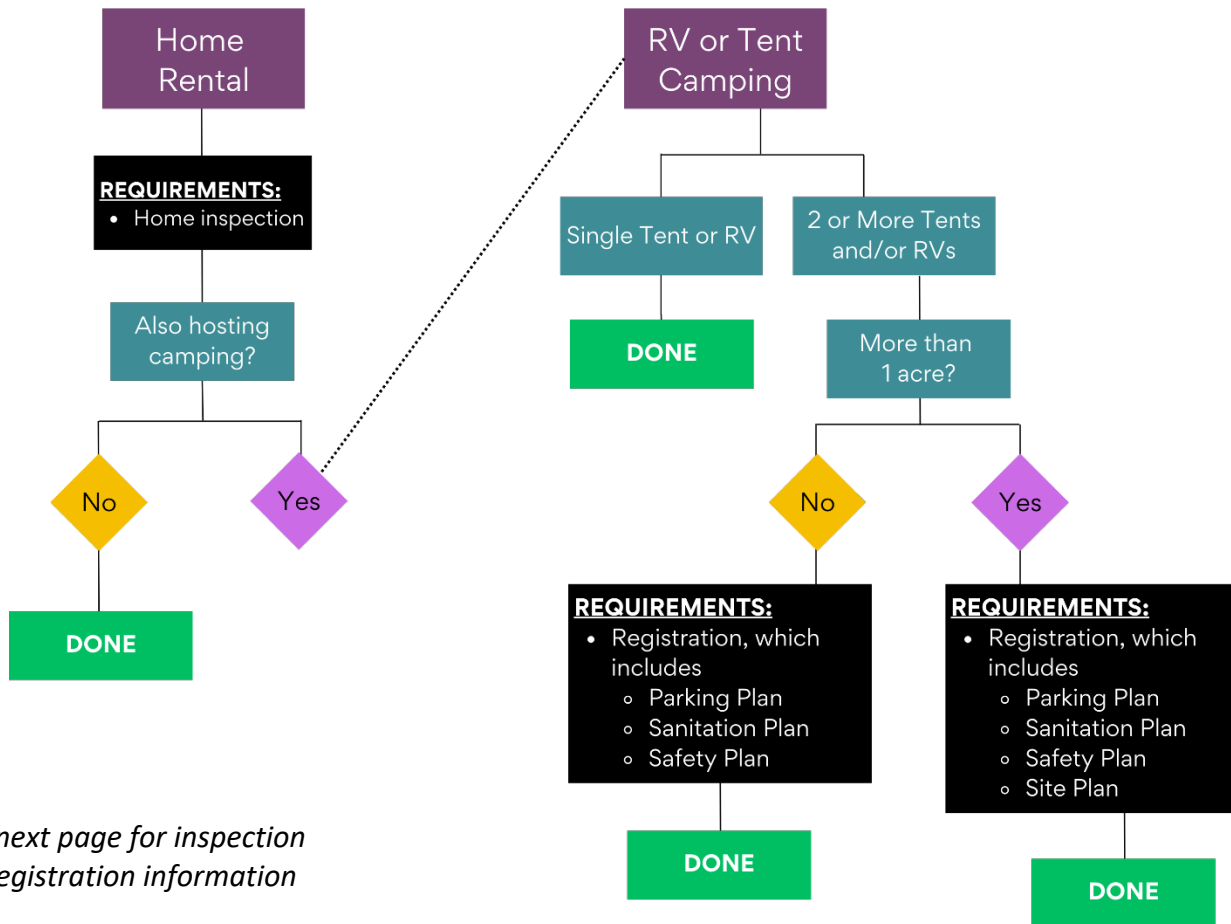
Eclipse Date: Monday, April 8, 2024

Eclipse Time: 12:21 p.m. to 3:01 p.m. with totality (darkness) 1:38 p.m. to 1:43 p.m.

Community Impact Days: Thursday, April 4 – Tuesday, April 9, 2024

The 2024 total solar eclipse presents a unique opportunity for the City of Hillsboro in which special conditions exist in relation to bed and breakfasts and short-term rental facilities (ex. Airbnb, Vrbo), camping, and other requirements in the City’s Code of Ordinances. An ordinance has been approved that establishes temporary conditions beginning on Tuesday, April 2, 2024 and extending through Tuesday, April 9, 2024. These include suspending location restrictions in regards to bed and breakfast and short-term rental facilities and establishing requirements for individuals desiring to use their property for camping during this time frame.

It has been decided that a single camping unit (an individual tent or recreation vehicle) be allowed per residential or commercial parcel and that anyone desiring more than one camping unit submit their request to staff along with a parking, sanitation, and safety plan. Any campground over one acre in size would also require a site plan. For full ordinances, please visit our website. For a simplified version of requirements for renting your home or property to eclipse tourists, please consult the following diagram:



**see next page for inspection and registration information*

For home inspections, call (254) 582-1144.

To register your campground, scan here →

Or visit www.eclipseboro.com/community and scroll down to the purple box that says “Hosting eclipse lodging?”

For questions about campground requirements, call Richard Reinhardt at (254) 580-2119 ext. 2418



HEALTH, SAFETY, AND LOGISTICS

Eclipse Date: Monday, April 8, 2024

Eclipse Time: 12:21 p.m. to 3:01 p.m. with totality (darkness) 1:38 p.m. to 1:43 p.m.

Community Impact Days: Thursday, April 4 – Tuesday, April 9, 2024

Eclipseboro Health, Safety, and Logistics Team

While the number of eclipse visitors is hard to estimate, both residents and visitors should expect increased activity on roadways, in neighborhoods, in public facilities, restaurants, parks, and retail stores. Hotels, short-term rentals, and campgrounds will be at peak capacity. The large influx of people expected to visit Texas during this eclipse event will have a huge impact on highways, gasoline supply, and other basic needs. To coordinate smooth operations, the City of Hillsboro has organized a specialized committee to plan for the eclipse. Members of the Health, Safety, and Logistics team represent:

- Hill County Emergency Management
- Hill County Sheriff's Department
- Hill Regional Hospital
- Hillsboro Department of Public Safety
- Hillsboro Fire and Rescue
- Hillsboro Municipal Airport
- Texas Department of Transportation

Transportation, Travel, and Parking

- **Expect traffic delays and changes in traffic patterns.** Backups are inevitable on April 8. Preparation ensures less frustration for visitors and residents alike. If traveling, plan for your basic needs such as food, water, fuel for your vehicle, and bathroom breaks in case you become stuck in traffic.
- **Motor Vehicle Accidents.** If you have a fender bender, please do not call 911 unless there are injuries, dangers, or leaking fluid. Then, move your vehicles safely to the side of the road and exchange insurance information.
- **Parking** will be very limited. Be prepared for long walks to your destinations. When parking, do so legally. Do not block driveways or roadways; doing so could hamper public safety from reaching those who need help.
- **Keep emergency vehicles in mind when parking.** Maintaining room for emergency vehicles is critical during large scale events such as the eclipse. Inside the city limits, parking in your driveway or on your own property, will help ensure first responders will not be impeded by parked vehicles on their way to an emergency call. In the county, this can be accomplished by parking completely off the paved portion of the roadway.
- **Be mindful of Texas's "move over" law.** Drivers in Texas are required to move over a lane or slow to 20 mph below the posted speed limit when approaching emergency vehicles, law enforcement, tow trucks, utility service vehicles, TxDOT vehicles, or other highway construction or maintenance vehicles using visual signals or flashing lights activated on the roadside. On roadways with posted speed limits of 25 mph or less, drivers must reduce their speed to 5 mph (Texas Transportation Code 545.157).

First Aid

Knowing how to treat minor injuries can make a huge difference in case of emergency. You may consider taking a first aid class, but simply having basic supplies on hand is key to stopping bleeding and preventing infection. To assist others or yourself if injured, have a first aid kit available with the following items:

- At least two pairs of latex or nitrile gloves
- Sterile dressings to stop bleeding and dress wounds
- Cleansing agent / soap
- Antibiotic towelettes
- Antibiotic ointment
- Burn ointment
- Adhesive bandages in a variety of sizes
- Thermometer
- Scissors
- Tweezers
- Eye wash solution to flush eyes
- Petroleum jelly or other lubricant
- Prescription medications you take daily such as insulin, heart medication, blood pressure medication, and asthma inhalers
- Prescribed medical supplies such as glucose and blood pressure monitoring devices
- Nonprescription drugs such as aspirin or non-aspirin pain reliever, anti-diarrhea medication, antacid, and laxatives

Emergency Services in Hillsboro

Hospitals:	Hill Regional Hospital 101 Circle Drive Hillsboro, TX 76645 (254) 580-8500	
Urgent Care / Walk-in Care Clinics:	HealthNow Urgent Care 207 I-35 Hwy NW Hillsboro, TX 76645 (254) 332-1709	QuickVisit Urgent Care 1200 Corsicana Hwy Hillsboro, TX 76645 (254) 651-1769
Fire Station:	Fire Station #1 110 West Franklin St. Hillsboro, TX 76645 (254) 582-8406	

EYE PROTECTION FOR TOTAL ECLIPSE VIEWING

Eclipse Date: Monday, April 8, 2024

Eclipse Time: 12:21 p.m. to 3:01 p.m. with totality (darkness) 1:38 p.m. to 1:43 p.m.

Community Impact Days: Thursday, April 4 – Tuesday, April 9, 2024

Looking directly at the sun is unsafe except during the brief total phase of a solar eclipse (“totality”), when the Moon entirely blocks the sun’s bright face, which will happen only within the narrow path of totality. The only safe way to look directly at the uneclipsed or partially eclipsed sun is through special-purpose solar filters, such as eclipse safety glasses or hand-held solar viewers. Homemade filters or ordinary sunglasses, even very dark or polarized lenses, are not safe for looking at the sun. Eclipse glasses and hand-held solar viewers should meet the ISO 12312-2 international standard for such products.

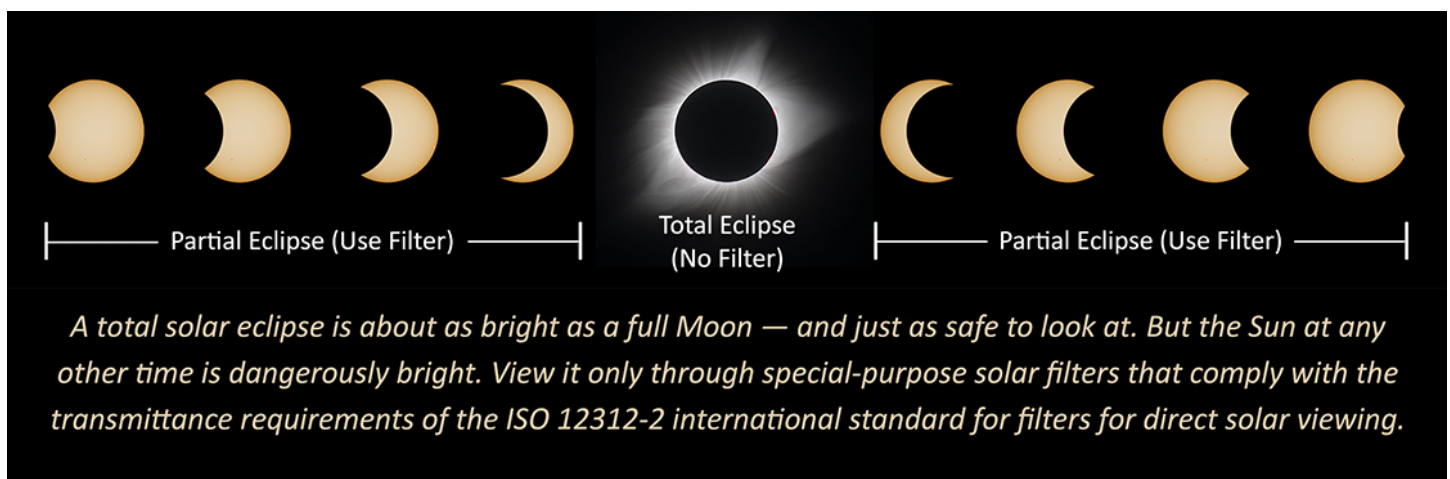


Figure 6: When to use eclipse glasses. Source: American Astronomical Society.

DO NOT:

- Do not look at the uneclipsed or partially eclipsed sun through an unfiltered camera, telescope, binoculars, or other optical device.
- Do not look at the sun through a camera, telescope, binoculars, or any other optical device while using your eclipse glasses or hand-held solar viewer - the concentrated solar rays will damage the filter and enter your eyes, causing serious injury.
- Do not assume that your welding helmet is enough. Only welding filters with a shade number of 12 or higher are safe for eclipse viewing. Shade number 12 may still be uncomfortable and shade number 15 is too dark. The "sweet spot" is shade 13, which best matches the view in purpose-made eclipse glasses and handheld solar viewers, though shade 14 works well too.
- Do not use adjustable or auto-darkening welding helmets as they do not auto-darken fast enough to protect your eyes.



To purchase eclipse safety glasses for **\$2/each**,
stop by City Admin (214 E. Elm St.)
or the Chamber of Commerce (115 N. Covington)



TIPS FOR HILLSBORO RESIDENTS

Eclipse Date: Monday, April 8, 2024

Eclipse Time: 12:21 p.m. to 3:01 p.m. with totality (darkness) 1:38 p.m. to 1:43 p.m.

Community Impact Days: Thursday, April 4 – Tuesday, April 9, 2024

In April, the City of Hillsboro is expecting a large and excited crowd to visit our great town due to the much-anticipated Total Solar Eclipse. We are expecting many people from all over the world to visit, stay the night, eat, shop, and explore while in town to watch this once-in-a-lifetime event. We want to make a great impression, but even more important, to take care of our town and each other.

On Monday, April 8, Hillsboro will experience a total solar eclipse. Beginning at 12:21pm, the moon will start to pass between the earth and the sun. The entire eclipse will last 2 hours and 40 minutes, but starting at 1:38pm, the spectacular “totality” phenomenon begins. The moon will completely block the face of the sun and cast a shadow on our town. For 4 minutes and 22.5 seconds, the sky will darken and the sun’s outer atmosphere will be visible.

Hillsboro is expecting a large and excited crowd for this event, but most will be here on Monday, April 8 only. On Thursday, Main Street is hosting eclipse activities for locals to celebrate this unique time together. On Saturday and Sunday, downtown and the outwill mall will have extra activities and events, and locals are encouraged to participate. The fun will include a carnival, music, vendors, and more.

While we expect Saturday and Sunday to be pleasantly busy in the city, the larger influx of visitors we will see on Monday will be logistically challenging. To help you have a positive experience, here are a few suggestions on how to stay informed and avoid inconveniences.

Staying Informed and Being Involved (or not!)

During the months leading up to the eclipse, here are a few things that you can expect as a resident:

- A series of town halls and public forums to provide more information about planning efforts.
- Regular communication through local media outlets, including The Reporter and KHBR.
- Regular updates on Eclipseboro social media accounts and the official website (www.eclipseboro.com)
- Cooperative beautification projects to provide a positive experience for our visitors.
- Numerous opportunities for citizens to become involved in planning and execution of events and activities during the eclipse weekend.

During this lead-up period, here are a few ideas for things you can do personally to participate:

- Attend town halls and public forums. Ask questions and provide feedback.
- Subscribe to the Eclipseboro newsletter at www.eclipseboro.com/community.
- Sign up at www.eclipseboro.com/joinus to receive information about being a volunteer, sponsor, entertainer, educator, or event host.

- Work with local civic and special interest groups to get them involved. There will be opportunities for everyone – from gardeners to construction workers to artists – to have a personal stake in our community success.
- Know that if you wish not to participate during community impact days and prefer to hunker down at home – that is also a great way to serve your community! Fewer cars on the road is helpful.
- Plan your own viewing experience. This will literally be a once-in-a-lifetime event!

Avoiding Inconveniences

Leading up to the eclipse, here are a few suggestions for things you can do to help you have a positive experience:

Errands and Appointments

Schedule your errands and appointments early – not on Monday, April 8, 2024, if possible. Check ahead if you have plans. Some services and businesses will be closed or have limited hours during this time. By scheduling your errands early, you will beat the crowds and give local stores and businesses time to restock before eclipse visitors arrive. This includes grocery shopping, doctor/dentist/veterinary appointments, prescriptions, etc.

Communications

- Expect interruptions in cellular service and internet service.
- Determine a backup plan for communicating with friends, family, and coworkers.

Supply and Demand

- Make sure you have an ample supply of all your medicines on hand. If you require oxygen tanks, have extra.
- Make sure your vehicles are fully fueled. Lots of visitors means lots of gas tanks that will need to be filled before our new friends can return home. Having your vehicles fueled before the weekend will keep you out of traffic and lines.
- Make sure that your pantry is stocked with food, paper goods and other necessities. Local restaurants will experience full tables and you probably will not be able to walk into your favorite place on Sunday night and be immediately seated.
- *Stock up on hospitality, patience, and goodwill! Be prepared to share them with everyone!*

Transportation and Parking

During community impact days (April 4 through April 9, 2023), heavy traffic congestion is expected in Hillsboro and all nearby highways. Please keep the following in mind:

- Parking will be very limited. Be prepared for long walks to your destinations.
- When parking, do so legally. Do not block driveways or roadways. Doing so could hamper public safety from reaching those who need help.
- If you have a fender bender, please do not call 911 unless there are injuries, dangers, or leaking fluid. Then, move your vehicles safely to the side of the road and exchange insurance information.
- Texas Department of Transportation is planning ahead to keep Texas moving, and we encourage you to do the same.

Health and Safety

Please also see the [Health, Safety, and Logistics](#) section.

911

- Call 911 for true emergencies only.
- Have the Hillsboro non-emergency phone number programmed into your phone ahead of the eclipse. **The non-emergency phone number is (254) 582-8406.**

Public Water Systems

To take pressure off the public water system during anticipated community impact days, consider postponing watering your lawn, washing your car, and please limit use of nonessential water.

Individual/Family Emergency Plans

Consider the eclipse an opportunity to check your emergency kits and emergency plans. If you do not have a kit or do not have a plan, now is an opportune time to do so. <add resource>

TIPS FOR HILLSBORO BUSINESSES

Eclipse Date: Monday, April 8, 2024

Eclipse Time: 12:21 p.m. to 3:01 p.m. with totality (darkness) 1:38 p.m. to 1:43 p.m.

Community Impact Days: Thursday, April 4 – Tuesday, April 9, 2024

Hillsboro expects a large increase in visitors during the community impact days listed above. This is a huge opportunity for local businesses. However, it is crucial that you prepare for the event. Grocery stores, gas stations, hotels, restaurants, transportation services, and the downtown commercial district will experience much heavier traffic than normal. The Hillsboro Chamber of Commerce is preparing local businesses for the eclipse and the City of Hillsboro has organized an Eclipseboro Private Business Committee that will share resources too.

Business Preparations

- **Consider extending hours of operation to meet customer needs.** There is opportunity for businesses who stay open late on Thursday, April 4, 2024, through Tuesday, April 9, 2024, including Sunday, which may be the busiest shopping day.
- **Stock.** Prepare for a significant increase in customers. Have extra stock (merchandise) and supplies (toilet paper, paper towels, soap, etc.) on hand.
- **Supply Chain Issues.** Be aware of, and plan to avoid, potential supply-chain issues with tents, canopies, port-a-potties, entertainment, etc.
- **Employee preparedness.** Encourage employees to arrive with a full tank of gas and leave knowing their homes are stocked with necessities by Thursday, April 4, 2023. Gas stations and grocery stores may be very busy or sold out of essential items. Make sure your staff has transportation to work and remind them to leave early when traffic is jammed.
- **Cash.** Be prepared for more cash transaction than usual. Have extra change and tills set up. Be aware that you may have larger than normal cash deposits over the weekend, so check ahead of time if your bank will be open on Monday, April 8, 2024.
- **Credit cards.** **How does your credit/debit machine access the internet?** If you use cellular service, internet service, or wireless transactions of any type, be prepared with a back-up plan as communications systems may be taxed. Do you have an old-school method of accepting credit cards if systems are down?
- **Communications.** Anticipate possible cellular service disruptions due to increased demand. Visitors may have urgent requests to use your landline business phone if cell service is limited. Decide beforehand how you want to handle these delicate situations and educate your employees on your policy. *If anyone has a 911 emergency and you have a landline, be prepared to help!*
- **Deliveries.** Evaluate when you receive regular deliveries. Those arriving on Monday, April 8, 2024 may be significantly delayed. Consider rescheduling.
- **Restrooms.** Public restrooms will be in short supply, and port-a-potties in limited locations may be at capacity. Expect customers who may be primarily interested in using your restroom facilities, and stock up on toilet paper, hand soap, and paper towels.

Business Opportunities

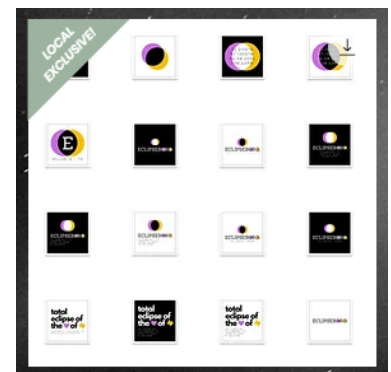
- **Make money doing what you already do, but on a larger scale.** Consider:
 - Staying open on days you are typically closed.
 - Staying open longer or later than your usual business hours.
 - Increasing your seating or business capacity on community impact days (Thursday, April 4 – Tuesday, April 9, 2024)
 - Adding workers on community impact days to sell or serve more.
- **Know and cater to tourist demographics.** Familiarize yourself with the [types of eclipse tourists](#). How can your business target eclipse tourists?
- **Host public or private eclipse events** and [register at your event](#) to support planning by our Health, Safety, and Logistics team. Opt into promos and the City will advertise your event on the Eclipseboro website.
- **Host a public viewing site on April 8, 2024** and [register your viewing site](#) to support planning by our Health, Safety, and Logistics team.
- **Sell eclipse glasses, bottled water, and food.** These items will be in high demand.
- **Sell t-shirts and other eclipse-themed merchandise.**
- **Update your business listings** on [Yelp](#), [TripAdvisor](#), and [Google Business](#). These are all free listings that supercharge your online presence. Adding photos, descriptions, hours, and asking for reviews will help your business on eclipse weekend and 365 days a year. Stop by the Hillsboro Chamber of Commerce if you need assistance.
- **Make this a “once in a lifetime” experience for all.**
 - Consider **entertainment** to attract patrons during the weekend leading up to the eclipse and encourage them to stay for at least several hours after the eclipse.
 - Create food and drink **specialties** to attract eclipse customers and increase your sales.
 - Make eclipse-friendly **signage** on your property, for example, “Welcome Eclipse Visitors!”
 - Provide extra trash receptacles.
 - If possible, assist, sponsor, or volunteer for Eclipseboro and Chamber of Commerce efforts to provide fun and educational activities in your community before and after the eclipse.
- Talk with your team about business opportunities. **Planning takes time – start now!**

Eclipseboro Branding Package – Local Exclusive

Local residents, businesses, nonprofits, and civic groups are exclusively authorized to purchase the official Eclipseboro Branding Package. You may download the branding package here:

www.eclipseboro.com/product-page/eclipseboro-logo-package

Pay \$50, accept the terms of use, and you’re automatically licensed to use the Eclipseboro artwork. This Eclipseboro Branding Package includes our main and secondary logos, graphics, and Total Eclipse of the Heart slogan with design variations and color inversions. Zip file includes JPG and PNG formats for each design.



Ideas

If you sell food and drinks, can you develop sun and moon themed offerings?

If you're a craft beverage producer or bar, can you launch a limited-edition Eclipseboro-branded wine, beer, or cocktail?

If you're a restaurant, can you expand seating to accommodate guests? Should you offer a limited menu on community impact days to help keep up with demand?

If you're an Airbnb or Vrbo, can you provide eclipse safety glasses and marketing materials?

If you own a large parking lot, can you coordinate and staff a paid-parking area?

If you're a retailer, can you sell eclipsy merchandise, t-shirts, or safety glasses?

If you have a storefront, can you decorate with spacey/eclipsy décor? People love to share photos of this.

TIPS FOR HILLSBORO CHURCHES, NONPROFITS, AND CIVIC GROUPS

Eclipse Date: Monday, April 8, 2024

Eclipse Time: 12:21 p.m. to 3:01 p.m. with totality (darkness) 1:38 p.m. to 1:43 p.m.

Community Impact Days: Thursday, April 4 – Tuesday, April 9, 2024

Hillsboro expects a large increase in visitors during the community impact days listed above. Eclipse tourists will be looking for food, beverage, entertainment, and souvenirs. This is a huge fundraising opportunity for churches, nonprofits, and civic groups. It is also an opportunity to foster relationships between groups, collaborate on big ideas, and showcase the best of our community.

Planning for Churches, Nonprofits, and Civic Groups

- **Further your mission.** Think about what you can provide on eclipse weekend that will support your mission. For example, Lion’s Club international has sight restoration and blindness prevention as a global cause, so the Hillsboro Lion’s club could consider promoting eclipse eye safety and distribute eclipse glasses.
- **Meet soon with your team.** Planning takes time.
- **Invite Eclipseboro to speak to your group.** Email acliett@hillsborotx.org if you’d like a representative to give a guest lecture about the eclipse.
- **Get involved with Eclipseboro working groups.** Email acliett@hillsborotx.org if your organization is interested in aligning with the official Eclipseboro initiative.
- **Know and cater to tourist demographics.** Familiarize yourself with the [types of eclipse tourists](#). How can your organization target eclipse tourists?
- **Register your event or fundraiser** at www.cognitoforms.com/CityOfHillsboro1/EclipseEventRegistration. Registration is free and helps the City with health, safety, and logistical planning. Opt into promos and we will advertise your event on the Eclipseboro [Visitor’s website](#).

Opportunities for Churches, Nonprofits, and Civic Groups

- **Host fundraisers you already provide.** Salad lunches, cookie wonderlands, pancake breakfasts, spaghetti dinners and many more fundraisers have proven success in Hillsboro and will also attract eclipse tourists. Adding an eclipse theme or celestial component will enhance your fundraiser.
- **Host a public viewing site on April 8, 2024** and [register your viewing site](#) to support planning by our Health, Safety, and Logistics team.
- **Sell eclipse glasses, bottled water, and food.** These items will be in high demand.
- **Update your organization’s listings** on [Yelp](#), [TripAdvisor](#), and [Google Business](#). These are all free listings that supercharge your online presence. Adding photos, descriptions, hours, and asking for reviews will help your organization on eclipse weekend and 365 days a year.

Information on Science Engagement for Educators and Administrators

- [Eclipse Resources from the National Science Teaching Association \(NSTA\)](#)
 - [Solar Science: Exploring Sunspots, Seasons, Eclipses, and More](#) by Dennis Schatz & Andrew Fraknoi (book)

- [When The Sun Goes Dark](#) by Andrew Fraknoi and Dennis Schatz (book)
- [Eclipse guide for educators](#) (PDF)
- [Eclipse guide for administrators](#) (PDF)
- [Handouts for family & friends](#) (PDF)
- [Eclipse Resources from SEAL: Solar Eclipse Activities for Libraries](#)
 - [Guide for Libraries & Communities](#) (PDF [note: 34 MB])
 - [Solar eclipse activities for libraries and other educational settings](#)
- ["How to Find an Eclipse Expert"](#) by Andrew Fraknoi (PDF)
- ["Selected Eclipse Activities for Educators"](#) by Andrew Fraknoi (PDF)
- ["Resources Connecting Eclipses and Other Fields"](#) by Andrew Fraknoi (PDF)

Preparations for Community Impact Days

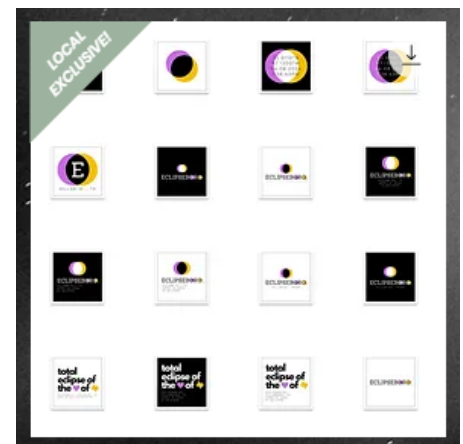
- **Have cash on hand.** Be prepared for more cash transaction than usual. Have extra change and tills set up.
- **Expect interruptions in credit card processing.** **How does your credit/debit machine access the internet?** If you use cellular service, internet service, or wireless transactions of any type, be prepared with a back-up plan as communications systems may be taxed. Do you have an old-school method of accepting credit cards if systems are down?
- **Anticipate possible cellular service disruptions** due to increased demand. Visitors may have urgent requests to use your landline phone if cell service is limited. Decide beforehand how you want to handle these delicate situations and educate your team on your policy. *If anyone has a 911 emergency and you have a landline, be prepared to help!*
- **Restrooms.** Public restrooms will be in short supply, and port-a-potties in limited locations may be at capacity. Expect customers who may be primarily interested in using your restroom facilities, and stock up on toilet paper, hand soap, and paper towels.

Eclipseboro Branding Package – Local Exclusive

Hillsboro residents, businesses, nonprofits, and civic groups are exclusively authorized to purchase the official Eclipseboro Branding Package. You may download the branding package here:

www.eclipseboro.com/product-page/eclipseboro-logo-package

Pay \$50, accept the terms of use, and you're automatically licensed to use the Eclipseboro artwork. This Eclipseboro Branding Package includes our main and secondary logos, graphics, and Total Eclipse of the Heart slogan with design variations and color inversions. Zip file includes JPG and PNG formats for each design.



Need ideas?

Email acliett@hillsborotx.org if you need help coming up with ideas for your organization.

TIPS FOR ECLIPSE VISITORS

Eclipse Date: Monday, April 8, 2024

Eclipse Time: 12:21 p.m. to 3:01 p.m. with totality (darkness) 1:38 p.m. to 1:43 p.m.

Community Impact Days: Thursday, April 4 – Tuesday, April 9, 2024

Hillsboro’s population of approximately 9,000 people is expected to swell during anticipated community impact days. It is best to arrive early, come prepared, and **have reasonable expectations given the situation.**

Planning for a Successful Trip

- **Arrive very early.** We recommend spending the night at or near your eclipse-viewing location. Expect highways and freeways to be extra busy before and after totality.
- **Arrive with a reservation.** Make sure you have a lodging and/or eclipse viewing site reservation confirmed before arriving to Hillsboro. Do not plan to find a hotel room upon arrival as we are sold out.
- **Come prepared.** Do not plan to stock up upon arrival. Supplies, cash, fuel, and restaurant meals may be limited or have long wait times due to high demand.
- **Consider your personal safety and security.** Have a good communication plan with your family and friends. Determine an area or landmark to reconnect if you become separated from your group.
- **Protect your belongings.** Do not leave valuables in your vehicles. Keep important items secure, i.e., cell phones, telescopes, binoculars, wallets, etc.
- **Service vehicles beforehand.** Make sure your vehicle/RV has been serviced and fueled (gas, propane, etc.).
- **Pick up after yourself.** Help us keep our community and public areas clean and safe. Follow the rule, “Pack it in, pack it out!”
- **Campground rules.** Familiarize yourself with rules and regulations. Eclipseboro campground rules can be found [here](#).

What to Bring

- | | |
|---|--|
| <input type="checkbox"/> Eclipse viewing glasses | <input type="checkbox"/> Comfortable walking shoes |
| <input type="checkbox"/> Water (plenty of it) | <input type="checkbox"/> Folding chairs |
| <input type="checkbox"/> First aid kit | <input type="checkbox"/> Jacket or sweatshirt (Texas weather is unpredictable) |
| <input type="checkbox"/> Necessary medications for you and pets | <input type="checkbox"/> Snack and meals |
| <input type="checkbox"/> Cash | <input type="checkbox"/> Prepaid phone card (cell service may be unavailable) |
| <input type="checkbox"/> Sunscreen | <input type="checkbox"/> Printed maps and directions |
| <input type="checkbox"/> Hat/visor | |

RULES AND ETIQUETTE

With so many people gathering in Hillsboro to witness this monumental event, here are some tips to ensure a safe and memorable experience for our residents and visitors:

Trespassing

- Do not trespass on private property. In additions to signs, purple fence posts are sometimes used to indicate “No Trespassing”.
- Do not trespass on public properties that are closed.

Parking and Transportation:

- Parking will be very limited. Be prepared for long walks to your destination.
- When parking, do so legally. Do not park in fire lanes. Do not block driveways or roadways. Doing so could hamper first responders from reaching those who need help.

Camping

- Camp only in designated camping locations.
- Comply with specific [campsite rules and regulations](#).

Other

- Do not litter. This includes leaving trash or debris on either public or private property as well as throwing garbage from a vehicle.
- Remain patient.
- Help one another.

Dark Sky Etiquette:

- During totality, avoid external lighting, flashlights, camera flashes, sparklers, fireworks, or any light that would detract from the phenomena.
- Turn off outdoor lights on eclipse day (April 8, 2024), and make sure that lights on a sensor are deactivated.
- Remove or cover solar lights.

FREQUENTLY ASKED QUESTIONS

What day is the total solar eclipse in Hillsboro?

Monday, April 8, 2024

What time is the total solar eclipse in Hillsboro?

Eclipse starts	12:21 pm
Start of totality	01:38 pm
Maximum eclipse	01:40 pm
End of totality	01:43 pm
Eclipse ends	03:01 pm

How long is the eclipse?

The entire eclipse event will occur from 12:21pm to 3:01pm. That's **2 hours 40 minutes** of eclipse effects! This is when Hillsboro will be shaded by the moon's penumbra. The most dramatic period of the eclipse is totality, which will occur from 1:38pm to 1:43pm. This is when Hillsboro will be shaded by the darkest part of the moon's shadow, the umbra. Hillsboro has one of the longest totalities in Texas at **4 minutes 22.5 seconds**. That's 11 seconds longer than Waco, 33 seconds longer than Dallas, and 2 minutes 42 seconds longer than Austin.

What will happen during the eclipse?

Light from the sun will be blocked by the moon, which will cast a vast shadow called an "umbra" over the earth. Hillsboro will experience a 360-degree sunset and the afternoon sky will darken. Scientists and observers have reported a quieting of nature during total solar eclipses, as birds stop chirping and bees cease to buzz. Watch [this simulator](#) from Eclipse2024.org to see what the total solar eclipse will look like from Hillsboro.

What's the big deal?

On August 21, 2017, America witnessed its first coast-to-coast total solar eclipse in almost 100 years. Hundreds of thousands of tourists traveled to the line of totality to witness the event. The total solar eclipse on April 8, 2024 will last almost two minutes longer than 2017! We expect a massive influx of visitors for days preceding the event and must prepare to accommodate. The last total eclipse in Hillsboro was July 29, 1878. After 2024, the next total eclipse in Hillsboro will not occur until after 2185.

How many people are coming to Hillsboro for the total eclipse?

It is impossible to know for sure, but Great American Eclipse is predicting anywhere from 15,000 to 60,000 will travel to Hillsboro, which is a prime viewing location, situated directly on the path of totality.

Will schools be closed on eclipse day?

Hillsboro ISD will be closed on Monday, April 8, 2024. We will be gathering information from other community schools regarding their status and will update this answer as soon as we have more information.

Will courts and other government offices be closed on eclipse day?

City and County offices will be closed on Monday April 8, 2024.

Where can I buy eclipse glasses?

Eclipse glasses are widely available online. Buy them soon to avoid supply chain disruptions, or purchase 50-packs of Eclipseboro branded glasses for \$25 by emailing info@eclipseboro.com.

What does a total solar eclipse feel like?

According to Dr. Kate Russo, founder of [Being in the Shadow](#),

a total eclipse of the Sun is one of the most dramatic and awe-inspiring events of the natural world. A total eclipse allows you to experience the three-dimensional nature of the universe – the Sun, the Moon, and Earth are all in perfect alignment, and you are standing in the shadow of our magnificent Moon. The scale is unimaginable, yet here it is happening right on top of you and around you. It is real. You can literally feel the ominous shadow before it arrives. The temperature drops. The wind picks up speed. The Sunlight slowly dims, bathing the surroundings in an eerie twilight that produces colors with shades rarely seen in the natural world. Then it is time. Moments before totality, a wall of darkness comes creeping towards you at speeds of up to 5,000 miles per hour – this is the full shadow of the Moon. You feel alive. You feel in awe. You feel a primitive fear. Then – totality. In this moment there is just you and the Universe.

Where can I watch the eclipse?

Residents who wish to view the eclipse from the comfort of their home are encouraged to do so. Wallace Park and The Outlet Mall will be public viewing areas, however, when they reach capacity, additional viewers will not be allowed to enter. These sites will be open on a first-come, first serve basis and should be reserved far in advance at www.eclipseboro.com/visitors. There will be additional public viewing areas announced in the future.

I live outside the City Limits. Can I rent out my home, RV, campground?

As a responsible property owner, please check with the carrier of your homeowner's insurance policy to avoid potential liability issues with these actions.

What supplies should I have on hand in case I can't leave my house? When should I shop?

Supplies should include cash, fueled up vehicles, food and water, first aid supplies, solar filters, medications, portable oxygen (if required). Shopping one to two weeks in advance is encouraged, if not sooner.

What if it rains?

We won't be able to predict the weather until 7 to 10 days before the eclipse, so we are planning for the best with contingencies for rain. Even if it rains, eclipse effects may still be felt and observed, but with less spectacle. Check out this [incredible video from NPR](#) that features a rained-out (but still successful) total eclipse event in Charlottesville.

[Eclipsophile](#) by Jay Anderson is your ultimate guide to eclipse weather. Anderson analyzed the average April cloud cover measured from the Aqua spacecraft at approximately 1:30pm for 2000-2020, with Texas showing the lowest amount of cloud coverage. This is surprising and encouraging data!

Is there an email address I can use to contact someone with questions?

For questions not addressed in this guidebook, please email info@eclipseboro.com.

What is the official website for eclipse information in Hillsboro?

The official website for the eclipse is www.eclipseboro.com and is being managed by City of Hillsboro Administration. To avoid duplication, information for both visitors and residents is included on this site.

Where can I learn more, ask questions, and provide feedback?

The City of Hillsboro, Eclipseboro Planning Team, and Hillsboro Chamber of Commerce will be holding several Town Hall meetings to discuss the total eclipse. Each will be held at **5:30pm at Historic City Hall – 127 E. Franklin St. Hillsboro, TX 76645**. The first two sessions will present identical information and a broad overview of community impact, tips to prepare, and how to get involved. In subsequent meetings, we will meet to discuss a particular topic in detail:

			Date	Town Hall Focus
1	5:30pm	Historic City Hall	Monday, August 7, 2023, and	Eclipse overview, community impact, tips to prepare, and how to get involved.
2	5:30pm	Historic City Hall	Tuesday, August 22, 2023	
3	6:30pm	Historic City Hall	Tuesday, September 26	Short-term rentals (ex. Airbnb, Vrbo, etc.)
5	5:30pm	Historic City Hall	Tuesday, November 28	Sweetwater, TN Main Street Program shares their experiences on the path of totality in 2017.
7	5:30pm	Historic City Hall	Tuesday, January 23	Planning for businesses, nonprofits, and civic groups – how to make \$\$\$ and be prepared.
8	8:00am	Overflow Coffee	Tuesday, March 3	Community coffee and eclipse info meetup

HELPFUL RESOURCES AND LINKS

Community Information

- Hillsboro's official eclipse website: [Eclipseboro.com](https://eclipseboro.com)
- NWS Current Conditions - Hillsboro Municipal Airport: forecast.weather.gov/
- Road Conditions: www.drivetexas.org

Websites About the April 8, 2024, Total Solar Eclipse

- Eclipse2024.org (Dan McGlaun)
- EclipseWise.com (Fred Espenak)
- Eclipsophile.com (Jay Anderson & Jennifer West)
- Exploratorium
- GreatAmericanEclipse.com (Michael Zeiler)
- [Hermit Eclipse](https://HermitEclipse) (Ian Cameron Smith)
- NASA Science: Eclipses
- [National Eclipse](https://NationalEclipse) (Dave Clark)
- Shadow & Substance (Larry Koehn)
- U.S. Naval Observatory

Information on Science Engagement for Educators and Administrators

- [Eclipse Resources from the National Science Teaching Association \(NSTA\)](#)
 - [Solar Science: Exploring Sunspots, Seasons, Eclipses, and More](#) by Dennis Schatz & Andrew Fraknoi (book)
 - [When The Sun Goes Dark](#) by Andrew Fraknoi and Dennis Schatz (book)
 - [Eclipse guide for educators](#) (PDF)
 - [Eclipse guide for administrators](#) (PDF)
 - [Handouts for family & friends](#) (PDF)
- [Eclipse Resources from SEAL: Solar Eclipse Activities for Libraries](#)
 - [Guide for Libraries & Communities](#) (PDF [note: 34 MB])
 - [Solar eclipse activities for libraries and other educational settings](#)
- ["How to Find an Eclipse Expert"](#) by Andrew Fraknoi (PDF)
- ["Selected Eclipse Activities for Educators"](#) by Andrew Fraknoi (PDF)
- ["Resources Connecting Eclipses and Other Fields"](#) by Andrew Fraknoi (PDF)

Websites About Solar Eclipses More Generally

- [Being in the Shadow](#) (Kate Russo)
- [Eclipses: Rice Space Institute](#) (Patricia Reiff et al., Rice University)
- [Eclipses: TimeandDate.com](#)
- [EclipseWise.com: Predictions for Solar Eclipses](#) (Fred Espenak)
- [Eclipsophile: Climatology & Weather for Celestial Events](#) (Jay Anderson & Jennifer West)
- [Hermit Eclipse](#) (Ian Cameron Smith)
- [International Astronomical Union Working Group on Solar Eclipses](#) (Jay Pasachoff et al.)
- [MrEclipse.com: The Ultimate Resource For Eclipse Photography](#) (Fred Espenak)
- [Solar Astronomy Today](#) (Stuart Parkerson)
- [Solar Eclipse](#) (Exploratorium, San Francisco, California)
- [Solar Eclipses](#) (Xavier Jubier)
- [WhenIsTheNextEclipse.com](#) (Jamie Carter)